

# BAC-2007 Smart Knob Thermostat

WiFi Type



For Fan Coil Unit

## New thermostat with knob BAC-2007 7 characteristics on the design

\*1.6 inch circular and 400\*400 TFT ;

\*Premium threaded side knob with an obsidian-like texture for a refined fingertip experience;

\*Above 6H tempered glass keeps your screen away from scratches;

\*Agile push button gives you an excellent experience;

\*Seven colors ambient light increase color to your life;

\*Various back panel designs available to match different home styles;

\* Supports language switching between Chinese, English, French, Italian, German, Russian, Spanish, and Portuguese.

## ABOUT YOUR THERMOSTATS

BAC-2007 series Modern Touch Screen Room Thermostats are designed to on/off control the fans and valves in air conditioner applications via comparison of the room temperature and setting temp. as reaching the aim of comfort and saving energy.

## MODEL DEFINITION

A: Two pipe; Control Fan Coil Unit and Two Wired Motorized Valve  
 M: Two pipe; Control Fan Coil Unit and 0-10V Motorized Valve  
 E: Four pipe; Control Fan Coil Unit and Two Wired Heat Valve and Two Wired Cool Valve.  
 N : Modbus RTU communication  
 W : Wifi connection  
 E : External Sensor  
 For example: BAC-2007ALW

## In the box you will find

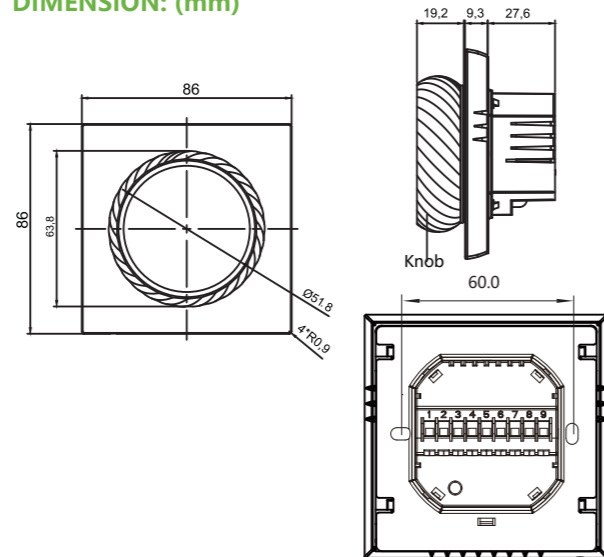
Thermostat	1pc	Screws	2pc
User Guide	1pc	Wall plate	1pc
QC Passed	1pc		

## TECHNICAL DATA

Power Supply: 95 ~240 VAC, 50/60Hz or 24V DC/AC, 50/60Hz  
 Please check the information laser printed on the back of the thermostat for the actual voltage.

Fan Relay Amps Resistance: 5A; Inductive: 3A  
 Valve Relay Amps Resistance: 3A; Inductive: 1A  
 Sensor: NTC3950, 10K  
 Accuracy: ±1°C  
 Set Temp. Range: 5-45°C  
 Room Temp. Range: 5-70°C  
 Display Temp. Range: 5 ~ 70°C  
 Ambient Temp.: 0~ 45°C  
 Ambient Humidity: 5 ~ 95 % RH (Non Condensing)  
 Storage Temp.: 0~ 45°C  
 Power Consumption: < 1.5W  
 Timing Error: < 1%  
 Shell Material: PC +ABS ( Fireproof)  
 Installation Box:  
 86 \* 86mm National Standard / 60 \* 60mm European Standard Junction Box  
 Wire Terminals: Wire 2 x 1.5 mm2 or 1 x 2.5 mm2  
 Protection Class: IP20

## DIMENSION: (mm)

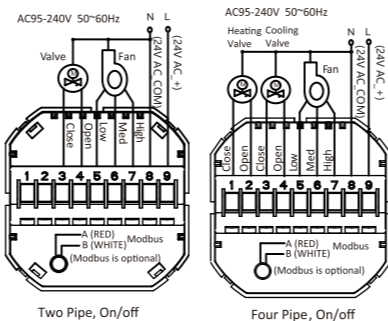


## BEFORE WIRING AND INSTALL

1. Read these instructions carefully. Failure to follow them could damage the product or cause a hazardous condition.
2. Check the ratings given in the instructions and on the product to make sure the product is suitable for your application.
3. Installer must be a trained, experienced service technician.
4. After installation is complete, check out product operation as provided in these instructions.

## WIRING

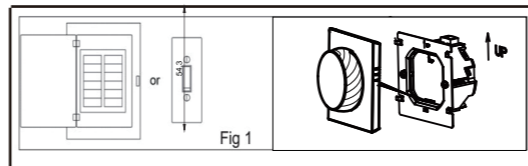
Please check the information laser printed on the back of the thermostat for the actual voltage.



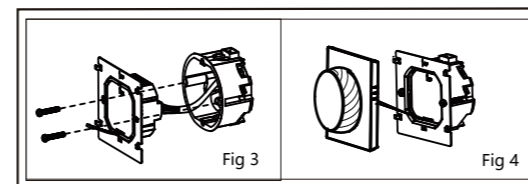
## INSTALLATION

Your thermostat is suitable for installation within a standard 86mm pattrass box or European 60mm pattrass box.

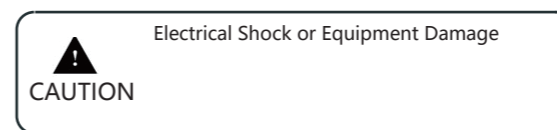
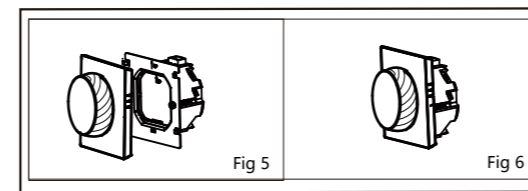
- Step 1. Keep power off. See Fig 1.(Live wiring may cause device damage, and such damage is not covered under warranty.)
- Step 2. Remove the mounting plate by pushing the assembly. See Fig 2.



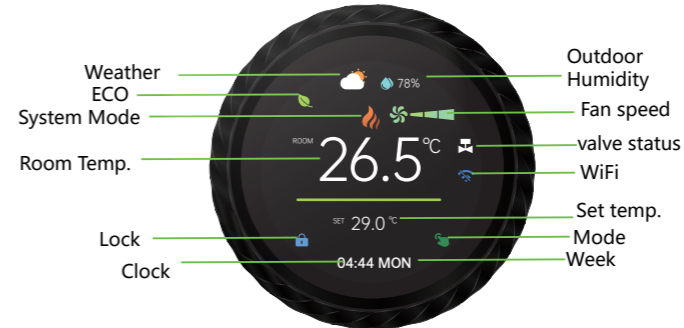
- Step 3. Connect the power supply and load it into the appropriate terminals. (See "Wiring your thermostat" for details and Figure 3).
- Step 4. Securely fix the mounting plate to the wall with screws.



- Step 5. Fasten body of thermostat and the mounting plate through rotating. See Fig 5.
- Step 6. Installation complete. See Fig 6.



## HOME SCREEN QUICK REFERENCE



## Temperature Setting Screen

Tip: Rotate the knob on the main screen to enter the temperature setting interface.

Set temperature range: 5~45°C



## Main Control Menu

Tip: Tap the main screen to enter the main control menu.

Main control: Power, Mode, System mode, Fan speed, Child Lock, Backlight, Network, ECO, Temp Compensation, Settings, Exit

## OPERATION

1. Press the home screen to enter the control interface.
2. Rotate the control interface to select
3. Press the control interface to confirm
4. Long press the control interface to return the home screen

1. Power ON: The thermostat is controlling the device. OFF: The thermostat stops controlling the device.



2. Mode Manual Mode / Programming mode (Schedule mode.)



3. System Mode Cooling/Heating/Ventilation



4. Fan speed High/Medium/Low/Auto



5. Lock On: Rotary thermostat knob activates child lock. Off: Rotary thermostat knob deactivates child lock.



6. Brightness Standby screen brightness setting. When set to 0, the screen will turn off.



- 7 WiFi "On" means Wi-Fi config mode; "Off" means not in config mode.



8. ECO "On" enables energy-saving mode; "Off" disables it.



9. Temp calibration After the thermostat has been working for 30 minutes, proceed with temperature calibration (-9~9°C, default -3°C).



10. Setting Click on the settings option to enter the sub-menu, which includes temperature unit switch, clock, Pipeline selection, and factory reset.



## ABOUT WIFI

### WI-FI CONNECTION

Before using your Wi-Fi thermostat for the first time, you must configure the Wi-Fi signal and settings using your smartphone or tablet. This enables communication between your devices.

#### Step 1 Download your APP (Fig1-1)



Fig 1-1



Fig 1-2 IOS / Android

Search for "Smartlife" in Apple Store or Google Play or use a browser to scan the QR code above (Figure 1-2), and complete account registration and installation according to the guidance of the APP.

#### Step 2. Connect the thermostat

Method 1: Bluetooth network distribution (Fig 2.1-Fig 2.4), Make sure your phone's Bluetooth, WiFi, and GPS are turned on, and set the thermostat to WiFi-enabled mode. Follow the tutorial below to complete the connection and setup.



Setting wifi to ON means the thermostat is in wifi pairing state.



The wifi icon flash quickly

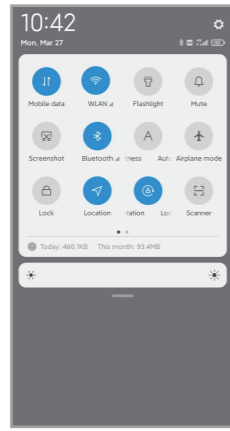


Fig2.1

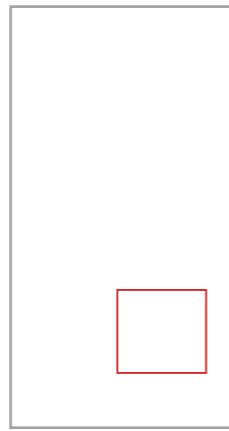


Fig2.2

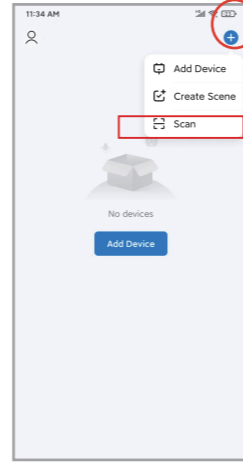


Fig2.5

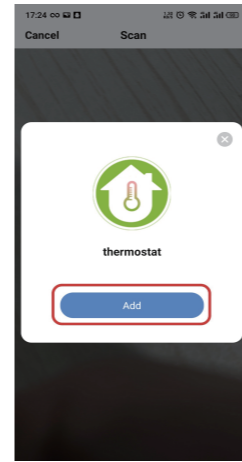


Fig2.6

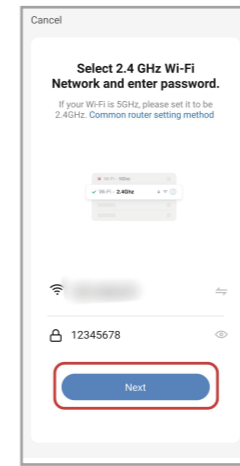


Fig2.7

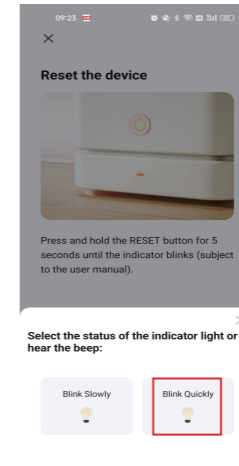


Fig2.8

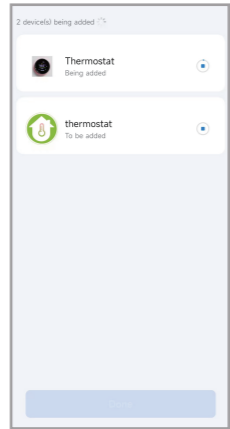


Fig2.3

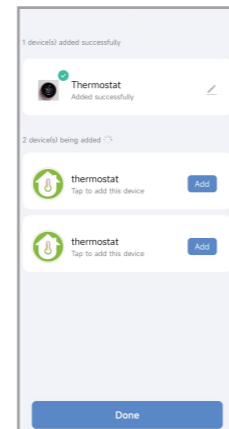


Fig2.4

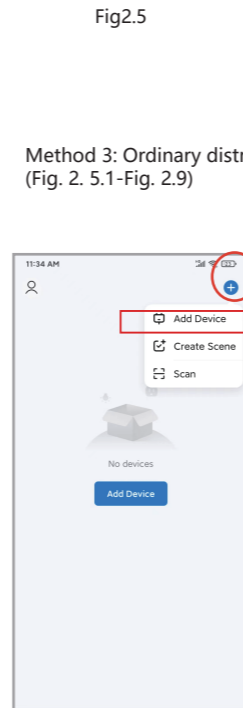


Fig2.5.1

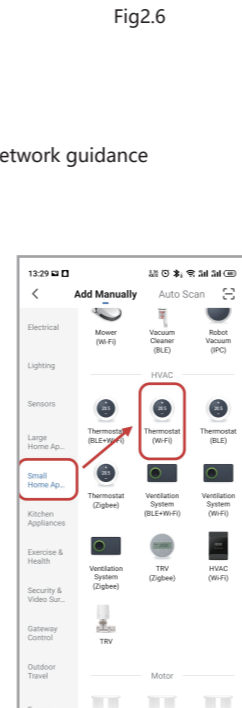


Fig2.6.1

#### Method 3: Ordinary distribution network guidance (Fig. 2. 5.1-Fig. 2.9)

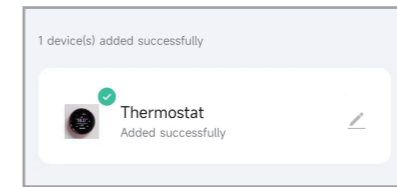


Fig2.9

#### APP operation interface description (FCU thermostat)



More settings

Adjust temp.

Target temp.

Fan speed High, Med., Low, Auto.

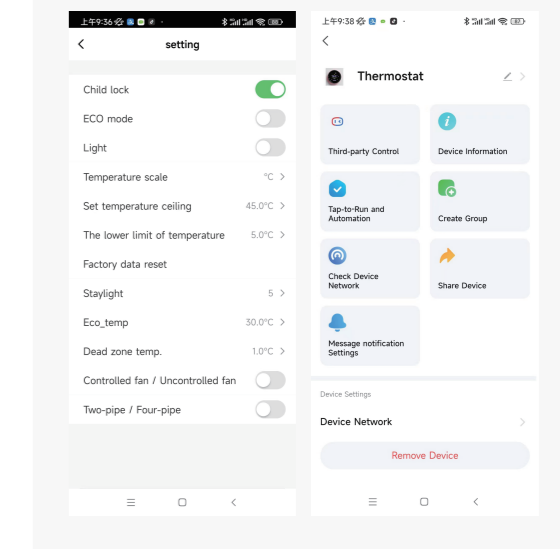
Mode Heating, Cooling, Ventilation

Week program

Power

Setting

## More settings



#### Set week program on your App Default settings for program schedule

Time display	WEEKDAY (MONDAY—FRIDAY) (1 2 3 4 5 shows on screen)		WEEKEND (SATURDAY) (6 shows on screen)		WEEKEND (SUNDAY) (7 shows on screen)	
	TIME	TEMPERATURE	TIME	TEMPERATURE	TIME	TEMPERATURE
Period 1	06:00	20 °C	06:00	20 °C	06:00	20 °C
Period 2	08:00	15 °C	08:00	20 °C	08:00	20 °C
Period 3	11:30	15 °C	11:30	20 °C	11:30	20 °C
Period 4	13:30	15 °C	13:30	20 °C	13:30	20 °C
Period 5	17:00	22 °C	17:00	20 °C	17:00	20 °C
Period 6	22:00	20 °C	22:00	15 °C	22:00	15 °C

## SIMPLE EXCEPTION HANDLING

No.	Phenomenons	Handling
1	Power is on but without display.	*Check if the terminals between LCD panel and Power Unit Box is loosen.
2	Without output but display works.	* Use a new LC panel or new Power Unit Box to replace the old one.
3	Room Temp. Is a little different from the actual.	* Do temperature calibration in item 1 of high senior options

## SERVICE

Your thermostat carries a 24 months warranty from date of purchase. Service out with the warranty period may incur a charge. More detail please contact with us directly.