

Descriptions

This device, Wi-Fi interface, communicates the status information and controls the commands from the MELCloud by connected to indoor unit.

- Some indoor unit air conditioners are not compatible with the Wi-Fi interface. Make sure that the indoor is compatible with the Wi-Fi interface before attempting to install the Wi-Fi interface.

Applicable Models

■ MSZ-FT25,35,50VG	■ MSZ-SF25,35,42,50VE3	■ PLA-ZM35,50,60,71,100,125,140EA2
■ MSZ-AP15,20VG	■ MSZ-GF60,71VE2	■ PLA-M35,50,60,71,100,125,140EA2
■ MSZ-AY25,35,42,50VG	■ MSZ-WN25,35VA	■ PEAD-M35,50,60,71,100,125,140JA(L)2
■ MSZ-AP60,71VG	■ MSZ-DM25,35VA	■ PEA-M200,250LA2
■ MSZ-EF18,22,25,35,42,50VGW,B,S	■ MFZ-KT25,35,50,60VG	■ PKA-M35,50,60,71,100LA(L)2
■ MSZ-BT20,25,35,50VG	■ MFZ-KW25,35,50,60VG	■ PCA-M35,50,60,71,100,125,140,KA2
■ MSZ-HR25,35,42,50,60,71VF	■ MLZ-KP25,35,50VF	■ PCA-M71HA2
■ MSZ-DW25,35,50VF	■ MLZ-KY20VF	■ PSA-M71,100,125,140KA
■ MSY-TP35,50VF	■ SLZ-M15,25,35,50,60FA2	■ S-series models
■ MSZ-FH25,35,50VE2	■ SEZ-M25,35,50,60,71DA(L)2	■ P-series models
■ MSZ-SF15,20VA	■ SFZ-M25,35,50,60,71VA	

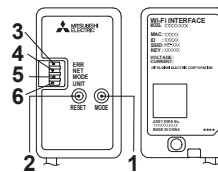
Specifications

Input Voltage	DC12.7 V (from indoor unit)
Power consumption	MAX 2 W
Size H×W×D (mm)	73.5×41.5×18.5
Weight (g)	95 (including cable)
Transmitter power level (MAX)	20 dBm @IEEE 802.11b
RF channel	1ch ~ 13ch (2412~2472 MHz)
Radio protocol	IEEE 802.11b/g/n (20)
Encryption	AES
Authentication	WPA2-PSK
Software Ver	XX.00
Length of cable (mm)	2,040

For Declaration of Conformity, please go to the website below.
<http://www.mitsubishielectric.com/ldg/ibim/>

Product Introduction

No.	Item	Description
1	MODE switch	It selects modes.
2	RESET switch	It resets the system and ALL settings.
3	ERR LED (Orange)	It shows the network error state.
4	NET LED (Green)	It shows the network state.
5	MODE LED (Orange)	It shows the Access point mode state.
6	UNIT LED (Green)	It shows the indoor unit state.



- (1) MODE switch
- The MODE switch is used for selecting modes in configurations.
- (2) RESET switch
- Hold down the RESET switch for 2 seconds to reboot the system.
 - Hold down the RESET switch for 14 seconds to initialize the Wi-Fi interface to the factory default.

When the Wi-Fi interface is reset to the factory default, ALL the configuration information will be lost. Take great care in implementing this operation.

Parts

①	Interface unit (with connecting cable)		1	④	Mounting cord clamp		1
②	Fixing screw for ⑥ 3.5×16 mm		2	⑤	Fastener (for bundling the wires)		1
③	Fixing screw for ④ 4×16 mm		1	⑥	Holder		1
				⑦	Clip		1

OPTIONAL
PARTS

INDOOR UNIT

How to Use / How to Install

1. Connecting the Wi-Fi interface

(For details on each system, see the relevant instruction manual.)

Turn off the breaker of the air conditioner or the ATW unit before connecting the cable to the indoor unit.

Run the cable inside the wall or above the ceiling when installing the Wi-Fi interface.

Refer to the installation manual of each model for connecting instructions and details.

- (1) The connecting cable connected to a indoor unit (CN105) should be mounted at the indoor unit or its vicinity.

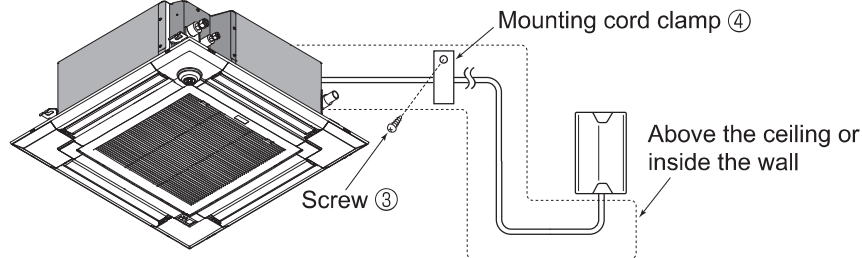
When mounting the Interface unit ① inside an indoor unit, refer to the installation manual of the indoor unit. Do not mount the Interface unit ① inside the indoor unit, if not mentioned.

<Air conditioner>

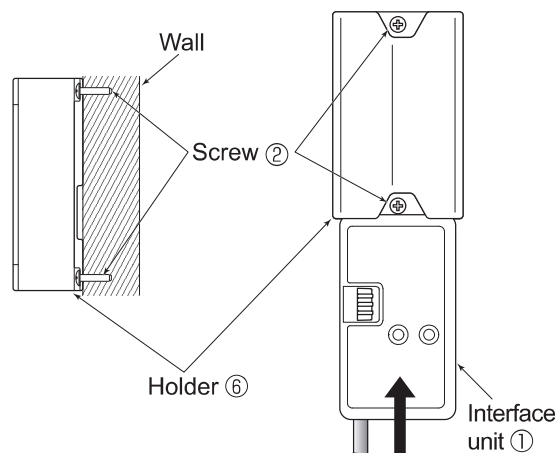
When mounting on the wall (Except when connecting to the wall mounted indoor unit)

The cable side of the interface unit ① should face downward.

- 4 way cassette indoor unit



- Fix the holder ⑥ on the wall in the orientation shown in the figure below with the screw ②.
- Note: Tighten the upper and then the lower screw.
- Insert the interface unit ① into the holder ⑥ until it clicks.

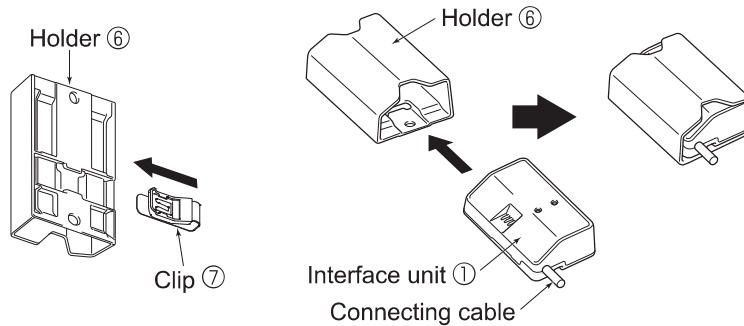


OPTIONAL
PARTS

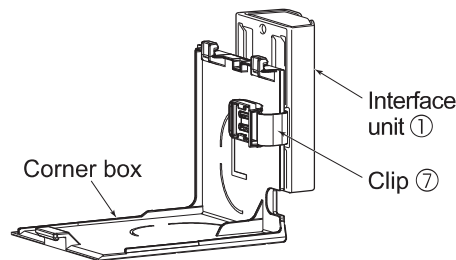
INDOOR UNIT

When mounting on the outer side of indoor unit (Wall mounted indoor unit)

- Insert the clip ⑦ into the holder ⑥ until it clicks.
- Insert the interface unit ① into the holder ⑥ until it clicks.



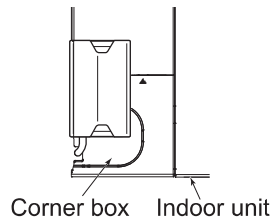
- Slip the clip ⑦ over the edge of corner box to fix the interface unit ①.
- Note: Mount the interface unit ① on the side of the indoor unit.



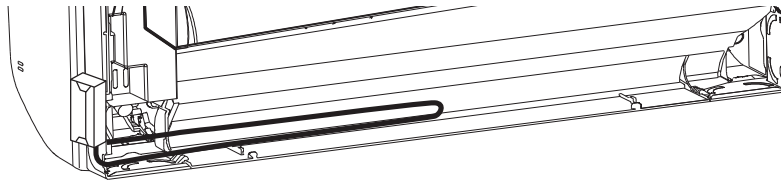
Example of mounting on the left side of indoor unit

Note: Interface unit ① can also be mounted on the right side of the indoor unit.

Side of the Indoor unit



- To check the LED indication after setup, remove the interface unit ① from the holder ⑥.



Run the connecting cable in the space on the back of the unit as shown in the above figure. Tuck cabling away and secure it.

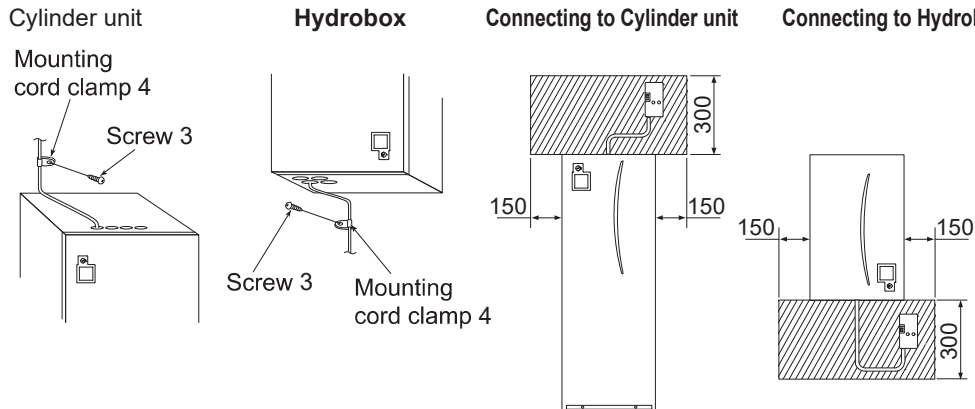
Note: Make sure that the connecting cable will not get caught on or between the installation plate and the wall, or between the indoor unit and the installation plate.

Failure to do so may cause damage to the connecting cable resulting in communication problems.

Make sure that the connecting cable will not come out from the indoor unit.

<ATW indoor unit>

(Unit: mm)



Mount in the same procedure for air conditioner. Please refer to "When mounting on the wall" on 1. Connecting the Wi-Fi interface (1) , "Air conditioner".

- (2) Turn on the breaker of the air conditioner or the ATW unit and check that the LED indication of the Wi-Fi interface enters the initial state shown on right.

Initial State

ERR	OFF
NET	OFF
MODE	OFF
UNIT	Flashing

Setting up

Refer to SETUP QUICK REFERENCE GUIDE (Included in same package) and SETUP MANUAL to connect to a Router for setting up.
For SETUP MANUAL, please go to the website below.
<http://www.mitsubishielectric.com/ldg/ibim/>

For MELCloud User Manual, please go to the website below.
<https://www.melcloud.com/Support>

OPTIONAL
PARTS

INDOOR UNIT